



1511 Hancel Parkway, Mooresville, IN 46158 317-837-2444

Transmission Crossmember Kit 1971-1973 Mustang (TCB-6R80K3)

Kit Includes:

- | | |
|--|------------------------------|
| (1) Transmission Crossmember (TCB-M71) | (2) 3/8"-16X4.25" HCS Gr.8 |
| (1) Mounting Bracket Kit (TM-M09) | (2) 3/8"-16 Pinch Nuts |
| (1) Trans Mount (TM-M06) | (4) 3/8 Flat Washer SAE Gr.8 |
| (4) Spacers, Black | |

Required Tools: Jack Stands
Floor Jack
Basic Hand Tools
Drill and 3/8" drill bit

Install Time: 1hr.

Pre-Install Note:

It's highly recommended to complete any required tunnel modifications and set the desired driveline angle prior to this installation.

Installation:

- 1) Raise vehicle to allow access for installation; support with jackstands.
- 2) Support the transmission with a floor jack, raise until the desired driveline angle is reached.
Note: Do not support transmission under oil pan.
- 3) Loosely attach mounting bracket to each end of crossmember as shown, DO NOT TIGHTEN. (Fig.1)
- 4) Install transmission mount bracket (TM-M06) to the transmission using the OEM bolts, position in center of vertical slots and snug bolts, DO NOT TIGHTEN.
- 5) Attach crossmember assembly to transmission mount, position in the center of the slot, lightly snug bolt but DO NOT TIGHTEN. (Fig.2) (Fig.3)
- 6) Position the mounting brackets against the subframe and clamp firmly into place. The brackets will be angled slightly downward towards the rear, following the driveline angle. (Fig.4 & 5)
NOTE: If needed, the height of the crossmember can be adjusted with the slots in the transmission mount and also by reversing the RED and BLACK bushings location.
- 7) Remove bolts attaching crossmember to mounting brackets.
- 8) Remove bolt securing crossmember to transmission mount, being careful not to move mounting brackets.
- 9) Using brackets as a template, scribe location of the mounting holes on the subframe.
(Alternatively, brackets can be welded into place; if so, skip to Step#13)
- 10) Remove brackets. Use a center punch and mark center location of the mounting holes.
- 11) Drill 3/8" holes through both sides of the subframe.
NOTE: BE SURE TO DRILL HOLES STRAIGHT OR BACKING PLATE MAY NOT FIT.
- 12) Fasten brackets into place using supplied backing plate and hardware.
- 13) Re-install crossmember and **tighten all bolts.**



TCB-6R80K3

www.BuyStifflers.com

Page

- 14) Remove floor jack and remeasure driveline angle to confirm it did not change; adjust if needed.
- 15) Remove jack stands and lower vehicle.

Fig.1



Fig.2

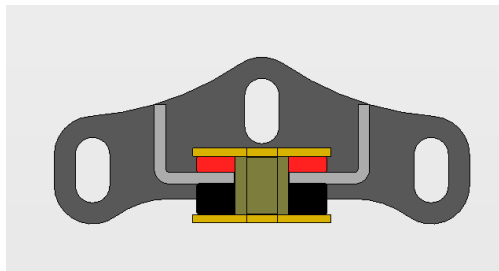


Fig.3



Fig.4



Fig.5

